












Cheshire Cricket Board

Our Player Pathway

Contents

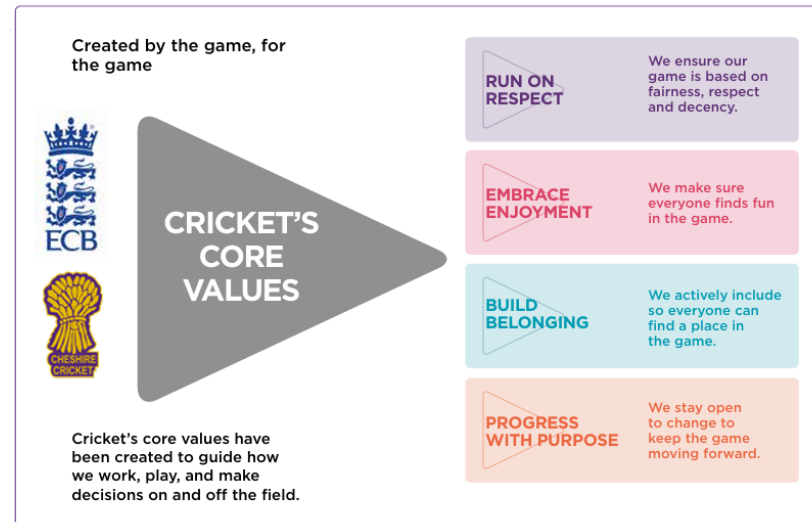
	Introduction	1
	Pathway Overview	2-3
	Entry Level Cricket	4
	Age Group Timelines	5-6
	Player Development Frameworks	7-9
	Player ID & Selection	10
	Cricketers who came through the Pathway	11-12
	Disability Pathway	13
	Safeguarding	14

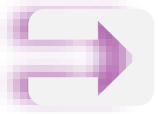
Introduction

Welcome to the Cheshire Cricket Board Player Pathway, an accessible and player-centred development programme that aims to instil a lifelong love of the game and support every child to reach their full cricketing potential.

In this document you will find further information about the opportunities for girls and how our Player Pathway supports the development of recreational cricket throughout the county.

Our staff and volunteers embrace cricket's Core Values (see below) in everything we do. These values are embedded into our Player Pathway and help guide how we work, play and make decisions on and off the



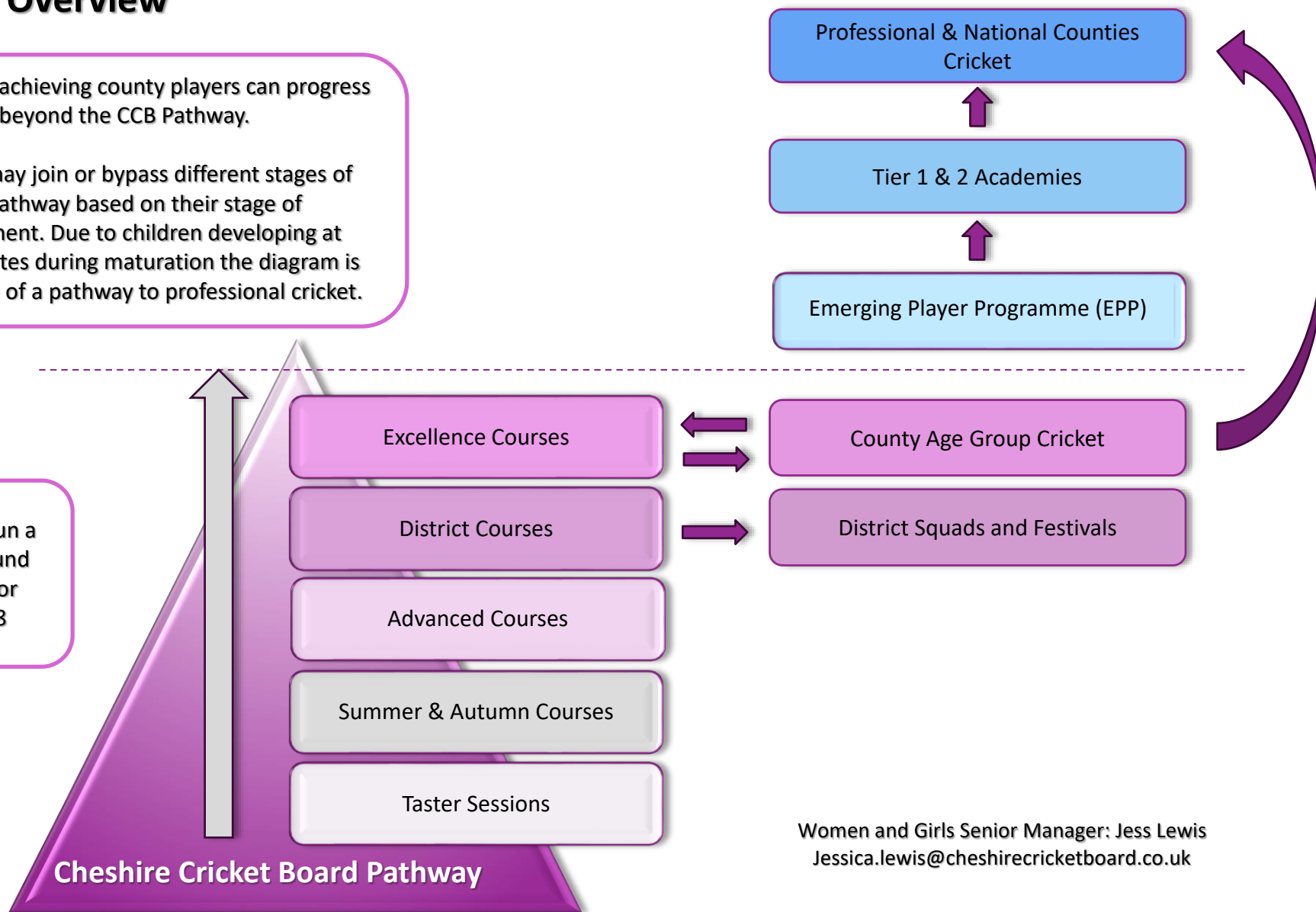


Pathway Overview

The highest achieving county players can progress beyond the CCB Pathway.

Children may join or bypass different stages of the pathway based on their stage of development. Due to children developing at different rates during maturation the diagram is an example of a pathway to professional cricket.

Cheshire Cricket Board run a comprehensive year-round coaching programme for children aged U9- U18



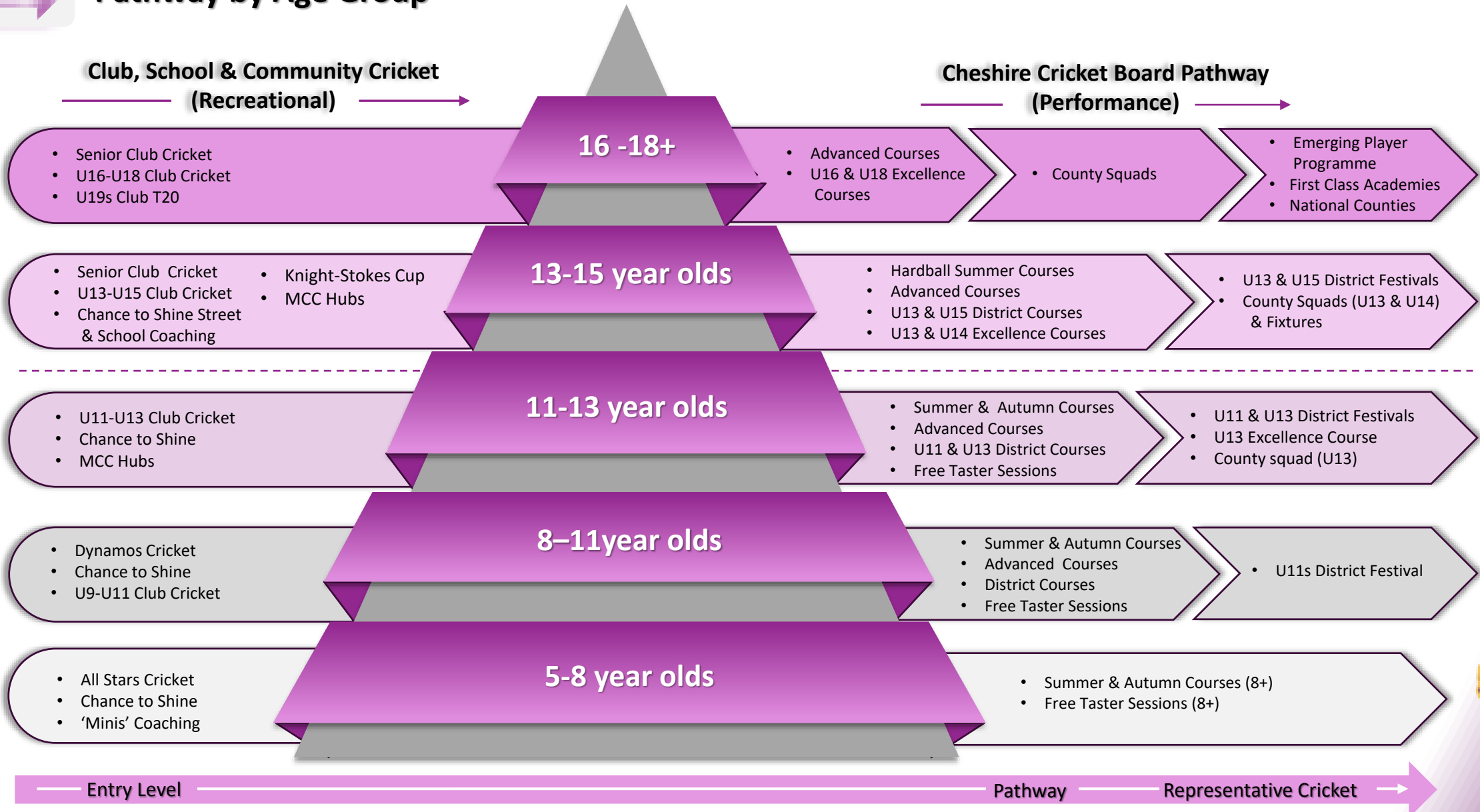
Women and Girls Senior Manager: Jess Lewis
Jessica.lewis@cheshirecricketboard.co.uk





Pathway by Age Group

Early Engagement Programme





Entry Level Cricket



Allstars Cricket

Entry level programme for 5-8 year olds. Find your local centre here:



Dynamos Cricket

For those leaving Allstars or new to the game. 8-11 year olds. Find your local centre here:



CCB National Programmes Manager Owen Williamson:
owen.williamson@cheshirecricketboard.co.uk



MCC Foundation

More information about MCC Hubs and local centres:



Chance to Shine

For more information about Chance to shine and Chance to Shine Street:



CCB Communities Manager Rehaan Rather:
rehaan.rather@cheshirecricketboard.co.uk

CCB Schools Manager Mark Greaves :
mark.greaves@cheshirecricketboard.co.uk



Free Taster Sessions

For children 8 + who are new to the CCB Pathway. Find a session here:



Junior Club Cricket

More information on junior club cricket and leagues can be found here:



CCB Clubs Manager Gareth Moorhouse:
gareth.moorhouse@cheshirecricketboard.co.uk





Pathway Schedule (8-13 year olds)

Autumn

Open to all children & abilities (8–13-year-olds)

4-6 week courses

Group coaching, softball games & nets (hard & softball)

Indoor venues across the county

District & Excellence

Invite only – Players nominated to this stage by CCB Coaches. 10-12 weeks programme

District Courses for U11s (school years 3-6) & U13s (years 7 & 8)

Excellence Course for U13s

At the conclusion of the course all children to be considered for selection for the District Festivals – U11s & U13s

U13 County Age Group squad to be selected

Summer

Open to all children & abilities (8–13-year-olds). 1-week courses (Mon-Fri)

Group coaching, softball games, competitions & nets (hard & softball)

Outdoor venues across the county

Sep

Oct

Nov

Dec

Jan

Feb

Mar

Apr

May

Jun

Jul

Aug

Invite only – girls nominated by a club or CCB coach

10-12 week coaching programme

Courses for children aged 8-13

Group Coaching, athletic development, game-based learning and nets (hard ball)

Advanced

District Festivals at U11s& U13s

Three squads selected at each age group and compete across the summer in a multi-format festival

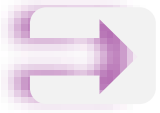
Highest achieving U13s can be moved to the County Age Group squad.

U13 County Age Group Squad to play in a comprehensive match programme across the summer

District Festivals & County Fixtures

Free Taster Sessions across the year





Pathway Schedule (14-18 year olds)

Advanced

Invite only – girls nominated by club or CCB coach.

10-12 week coaching programme

Courses for children aged 14-18

Group Coaching, athletic development, game-based learning and nets (hard ball)

District & Excellence

Invite only – Players nominated to this stage by CCB Coaches. 10-12 weeks programme

District Courses for U15 (school years 9&10)

At the conclusion of the course all children to be considered for selection for the U15 District Festival

Excellence Course for U14s, U16s & U18s

County Age Group squads to be selected for U14s, U16s & U18s

Summer

Hardball Courses for children (14–15-year-olds).

1-week courses (Mon-Fri)

Group coaching, hardball games, competitions & nets (hardball)

Outdoor venues across the county

Sep

Oct

Nov

Dec

Jan

Feb

Mar

Apr

May

Jun

Jul

Aug

Open to all children & abilities (14–16-year-olds)

4-6 week courses

Group coaching, softball games & nets (hardball)

Indoor venues across the county

Autumn

Emerging Player Programme (EPP) sits at the top of the Pathway apex. Tier 1 & 2 counties run EPP programmes and work closely with Tier 3 counties to ensure players have the opportunities to reach their full potential.

High performing county players and those identified with the potential to excel (typically aged 13-16) are selected for the programme each year

Emerging Player Programme

U15 District Festival

Three squads selected and compete across the summer in a multi-format festival

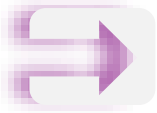
Highest achieving players can be moved to the County Age Group squad.

County Age Group Squads

U14, U16 & U18 County Age Group Squads to play in a comprehensive match programme across the summer

District Festivals & County Fixtures





Pathway Frameworks

ENJOYMENT

CREATIVITY

SKILFUL

RESILIENCE

ADAPTABLE

RESPECT

DETERMINATION

ACCOUNTABLE

**EMBRACE & BUILD**

Embracing fun & excitement in the game



U8 - U13

**PROGRESS**

Understanding your game



U14 - U18
EPP & Academies

**KNOW**

Know your game



National County & Professional Cricket

An accessible and player-centred Talent Pathway that enables every child in Cheshire to play to their full potential and develop a lifelong love of the game





EMBRACE & BUILD FRAMEWORK (U8 –U13)

	TECHNICAL	TACTICAL	MENTAL	PHYSICAL
BATTING	<ul style="list-style-type: none">BALANCED SET UPATTACK & DEFENDEXECUTE SHOTS WITH VERTICAL & HORIZONTAL BAT	<ul style="list-style-type: none">WHEN TO ATTACK & DEFENDSCORING OPTIONS, HITTING GAPS & BOUNDARY HITTING	<ul style="list-style-type: none">MANAGING FOCUSDECISION MAKINGRESILIENCE	<ul style="list-style-type: none">AWARENESS OF S&C TO IMPROVE BATTINGEFFECTIVE RUNNING BETWEEN THE WICKETS
SEAM BOWLING	<ul style="list-style-type: none">GRIP & WRIST POSITIONSAFE & REPEATABLE ACTIONHEAD REMAINS LEVEL THROUGH ACTION	<ul style="list-style-type: none">FIELD SETTINGAWARENESS OF BATTERS STENGTHS & WEAKNESSESSEAM AND SWING	<ul style="list-style-type: none">GOOD DECISION MAKINGRESILIENCEPOSITIVE MINDSET	<ul style="list-style-type: none">ABILITY TO JUMP AND LANDBASIC RUNNING TECHNIQUECORE STRENGTH
SPIN BOWLING	<ul style="list-style-type: none">GENERATE SPINSAFE & REPEATABLE ACTIONSTABLE BASE	<ul style="list-style-type: none">FIELD SETTINGAWARENESS OF BATTERS STENGTHS & WEAKNESSESTYPES OF SPIN	<ul style="list-style-type: none">BOWL TO A PLANGOOD DECISIONSRESILIENCEPOSITIVE MINDSET	<ul style="list-style-type: none">CORE STRENGTHAWARENESS OF S&C TO IMPROVE PERFORMANCE
FIELDING	<ul style="list-style-type: none">STABLE BASE & COORDINATED HANDS (CATCH)ATTACK, INTERCEPT & THROW	<ul style="list-style-type: none">READ & ANTICIPATE BATTERSATTACK THE BALL & APPLY PRESSURE	<ul style="list-style-type: none">COMMITMENTMANAGING FOCUSWANT TO TAKE WICKETS	<ul style="list-style-type: none">SPEEDAGILITYRUNNING, CHANGE OF DIRECTION, DIVING
WICKETKEEPING	<ul style="list-style-type: none">BIG CATCHING AREAPOSTURE IN SET UPHANDS & FEET WORK TOGETHER	<ul style="list-style-type: none">STARTING POSITIONS STOOD UP & BACKSUPPORTS CAPTAIN & BOWLERENERGY/ENTHUSIASM	<ul style="list-style-type: none">RESILIENCEMANAGING FOCUSRECOVER FROM MISTAKES	<ul style="list-style-type: none">STRENGTH, FLEXIBILITYFOOTWORK PATTERNSAWARENESS OF S&C.

Access CCB's detailed framework here:





PROGRESS FRAMEWORK (U14-U18)

	TECHNICAL	TACTICAL	MENTAL	PHYSICAL
BATTING	<ul style="list-style-type: none">• HEAD IN OPTIMAL POSITION• CONTROL BATPATH• BALANCE IN ATTACKING SHOTS• SCORE AGAINST SPIN – SWEEP &/OR USE FEET• DEFEND SHORT BALL	<ul style="list-style-type: none">• TEMPO OF INNINGS• CAN CREATE ANGLES AND USE CREASE• UNDERSTAND BOWLER WEAKNESSES• MANIPULATE THE FIELD	<ul style="list-style-type: none">• MANAGING FOCUS• RESILIENCE• SURVIVE AND THRIVE VS SHORT BOWLING• GOOD DECISION MAKING• POSITIVE MINDSET	<ul style="list-style-type: none">• ENDURANCE• STRENGTH• SPEED• AWARENESS OF S&C
SEAM BOWLING	<ul style="list-style-type: none">• STRONG BASE & CORE TO SUPPORT TALL ACTION• CONTROL STOCK BALL & VARIATIONS• DEVELOPED SEAM POSITION	<ul style="list-style-type: none">• FIELD CHANGES• ABILITY TO ASSESS CONDITIONS & SURFACES• UNDERSTAND BATTERS STRENGTH & WEAKNESS	<ul style="list-style-type: none">• BODY LANGUAGE• RESILIENCE• GOOD DECISION MAKING	<ul style="list-style-type: none">• STRENGTH/ POWER• SPEED• ENDURANCE• AWARENESS OF S&C
SPIN BOWLING	<ul style="list-style-type: none">• GRIPS & PRESENTS GOOD SEAM• BODY PARTS ALIGNED TO TARGET	<ul style="list-style-type: none">• FIELD CHANGES• KNOWLEDGE OF PACE & DIFFERENT PITCHES/CONDITIONS• BATTERS STRENGTHS & WEAKNESSES	<ul style="list-style-type: none">• BODY LANGUAGE• RESILIENCE• GOOD DECISION MAKING	<ul style="list-style-type: none">• STRENGTH/FLEXIBILITY• ENDURANCE• REPEATABILITY• AWARENESS OF S&C
FIELDING	<ul style="list-style-type: none">• GOOD POSTURE & DYNAMIC BALANCE FOR CATCHING• POWER & WEIGHT TRANSFER WHEN THROWING• DIVING & STOPPING	<ul style="list-style-type: none">• ABILITY TO READ THE GAME• CAN IMPACT THE GAME POSITIVELY BY SUPPORTING CAPTAIN & BOWLER	<ul style="list-style-type: none">• MANAGING FOCUS FOR LONG PERIODS OF TIME• 'WANT THE BALL' ATTITUDE• RECOVER FROM MISTAKES• COMMITMENT• LEADERSHIP	<ul style="list-style-type: none">• POWER• DIVING & THROWING RANGE• SPEED• MAINTAIN PERFORMANCE UNDER FATIGUE
WICKETKEEPING	<ul style="list-style-type: none">• GOOD POSTURE IN SET UP & MAINTAINED THROUGH CATCH• SAFE CATCHING• DYNAMIC MOVEMENTS	<ul style="list-style-type: none">• PREFERRED STARTING POSITIONS FOR BOWLER/ SURFACE/BATTER.• ANTICIPATION	<ul style="list-style-type: none">• MANAGING FOCUS FOR LONG PERIODS OF TIME• PRE DELIVERY ROUTINE• RESILIENCE	<ul style="list-style-type: none">• QUICK FEET & GOOD LATERAL MOEVEMENTS• FAST HANDS• ENDURANCE

Access CCB's detailed framework here:





Talent Identification & Player Selection

Cheshire Cricket has an excellent record of developing talented individuals and teams, nurturing players who have gone on to achieve success at every level of the game. We're proud of our accessible pathway, ensuring every child has the opportunity to reach their full potential regardless of any barriers they may find in their way. With a wide talent pool and multiple entry points into the pathway, we provide opportunities for players of all abilities to develop and progress within a supportive and inclusive environment.

Eligibility

We adhere to ECB guidance on player eligibility, which requires that each player meets at least one of the following criteria: they must reside in, be educated in, or play for a club within Cheshire. We are committed to maintaining an open and inclusive pathway whilst ensuring that our representative teams reflect the diversity and strength of our local communities and club network.

Development Framework

Children are assessed against our Development Framework by our team of experienced coaches. We take a holistic approach to coaching each child, observing their technical, tactical, mental and physical attributes.

Relative Age Effect & Physical Attributes

Coaches are aware of the relative age effect and will acknowledge which quarter of the year a child was born. We take this into consideration with all selections and make decisions based on future potential at that point in time. We also observe a child's physical data and general movement patterns. Players are monitored by CCB's Strength & Conditioning lead periodically.

Many Eyes – Many Times

Cheshire Cricket run a 30-week coaching programme staffed by experienced full-time level 2,3 & 4 coaches. We value each others' views and feedback on children we coach and decisions are made from observations made over a long period of time rather than a one-off viewing.

Work Ethic & Attitude

We are looking for children with a growth mindset and a willingness to learn and improve. We also take into consideration a child's attitude towards their own game, peers and coaches.

Match Play

We observe players during our district and representative fixtures during the summer. For the older juniors we will observe performances within senior club cricket.





Professional Cricketers from our Player Pathway



George Balderson

England U19s,
Lancashire

"My time with Cheshire was not only the most enjoyable of my childhood but also fundamental in helping me to become the cricketer I am today. The lessons I learnt about teamwork, leadership and all-round cricketing skills at a young age were essential. I can only say thank you to the coaches who helped me at a young age to get to where I am today"



Chris Edwards

England LD Captain
CCB Coach

"Cheshire Cricket helped shape my game to become the player I am today. I learnt to believe in myself and that hardwork, effort and determination pays off. Enjoy your cricket and embrace everything you learn on the courses"



Sophie Ecclestone

England, Lancashire,
Manchester Originals

"Playing club and county cricket in Cheshire played a huge part in my development and really sparked my love for the game"





Female Professional Cricketers from our Player Pathway



Liv Bell

Lancashire



Bethan Robinson

Northamptonshire



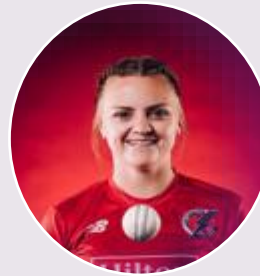
Kate Coppack

Essex



Tilly Kesteven

Lancashire



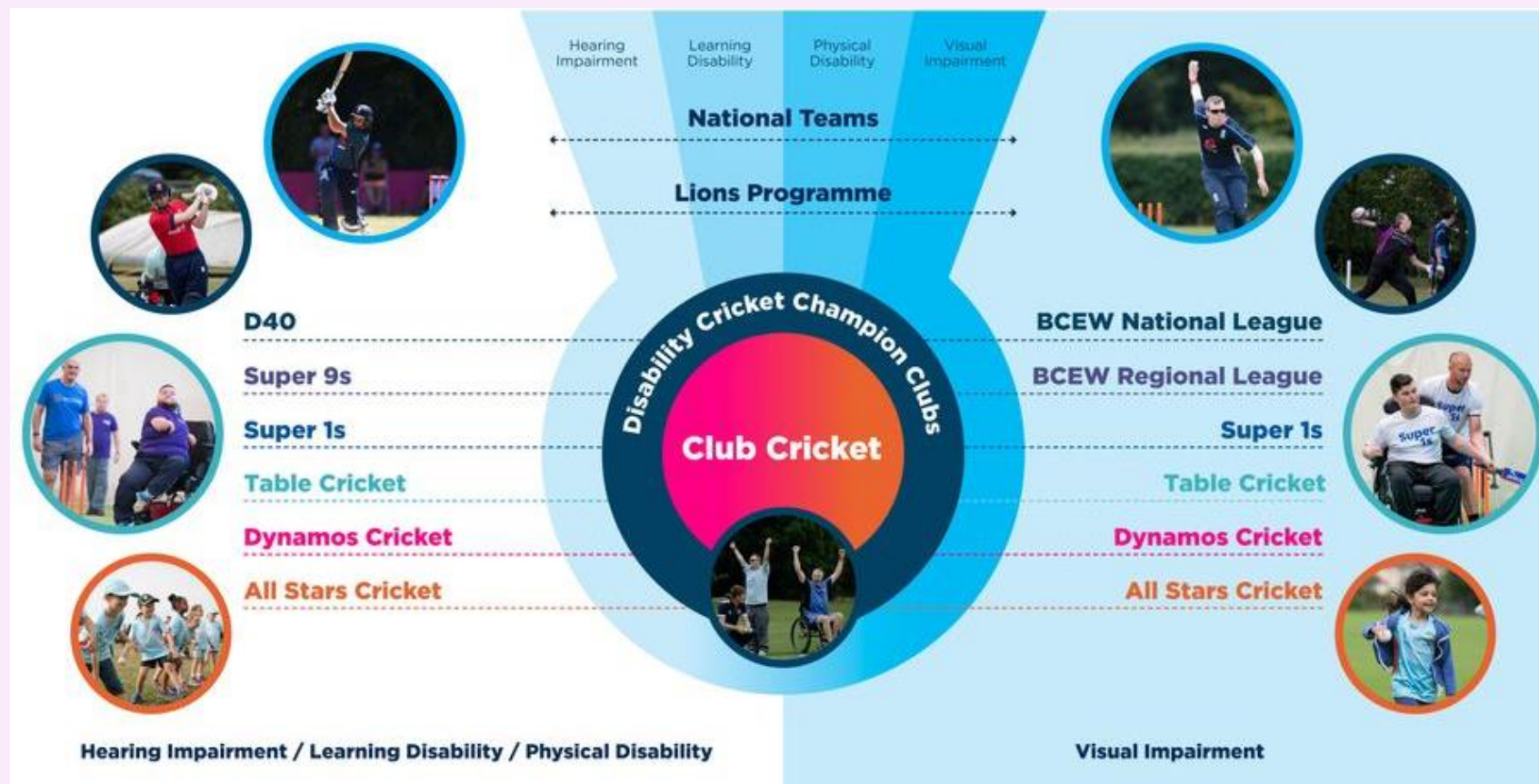
Sophie Morris

Lancashire





Disability Pathway



Cricket is a game for everyone. If you have a child with a disability, please get in touch to discuss the opportunities within our club, community and Talent Pathways.

CCB Disability Manager Owen Williamson:
owen.williamson@cheshirecricketboard.co.uk

CCB Disability Coach Chris Edwards:
chris.edwards@cheshirecricketboard.co.uk





Safeguarding



Cheshire Cricket Board is committed to ensuring that all children, young people (aged under 18) and adults who may be at risk involved with cricket in Cheshire have a safe, welcoming and positive experience. We comply with **England Cricket Board's (ECB) Safe Hands Policy** which promotes good practice, helps raise awareness and ensures people know what to do if they have any concerns about children or the behaviour of adults in cricket.



Julie Rafferty

County Safeguarding Officer
Julie.Rafferty@cheshirecricketboard.co.uk

More information
about safeguarding in
cricket can be found
on our website:

